

VenturePark Beachline

7650 AMSTERDAM DRIVE, ORLANDO, FLORIDA | WWW.VENTUREPARKBEACHLINE.COM



220,871 SF ORLANDO INDUSTRIAL LOGISTICS CENTER FOR LEASE | AVAILABLE Q3 2023





HIGHLIGHTS

ADDRESS	7650 Amsterdam Dr. Orlando, FL 32832
SQUARE FOOTAGE	220,871 SF
SITE SIZE	16.7 Acres
CLEAR HEIGHT	36'
DOCKS	35 (9' x 10')
DRIVE-INS	2 (12' x 14')
PARKING RATIO	1:1,000 SF
TRAILER STALLS	53 Stalls
COLUMN SPACING	56' x 50' Typical 60' Speed Bay
BUILDING DIMENSIONS	308' x 709'
TRUCK COURT	175'
FIRE SUPPRESSION	ESFR
POWER	2,000 Amps (3-Phase)
ANTICIPATED DELIVERY	Q3 2023



 VenturePark Beachline

528

528

Correct Craft

Kratos Defense &
Security Solutions

Disney

Escalade

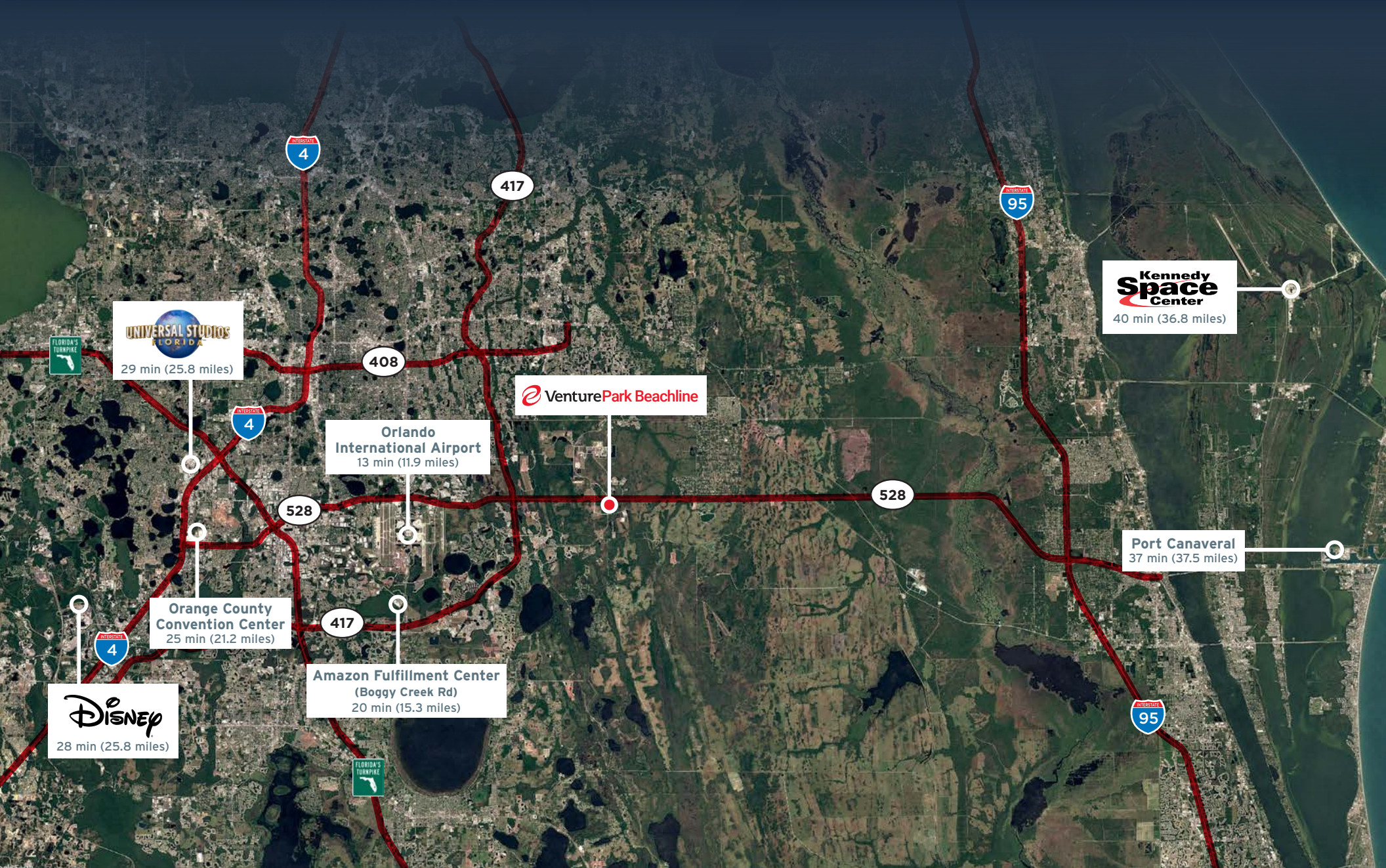
JB Hunt

Electrolux

Ace Relocation Systems

Dowden Rd Extension

Sunbridge Parkway Extension
(2023 Commencement)

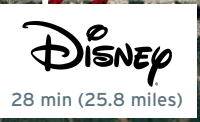



29 min (25.8 miles)

Orlando International Airport
13 min (11.9 miles)

Orange County Convention Center
25 min (21.2 miles)

Amazon Fulfillment Center (Boggy Creek Rd)
20 min (15.3 miles)


28 min (25.8 miles)

 VenturePark Beachline

Kennedy Space Center
40 min (36.8 miles)

Port Canaveral
37 min (37.5 miles)

FOR LEASING INFORMATION, PLEASE CONTACT:



Jared Bonshire
Executive Managing Director
(t) +1 407 541 4414
jared.bonshire@cushwake.com



David Perez
Executive Managing Director
(t) +1 407 541 4435
david.perez@cushwake.com



Taylor Zambito
Director
(t) +1 407 541 4409
taylor.zambito@cushwake.com