

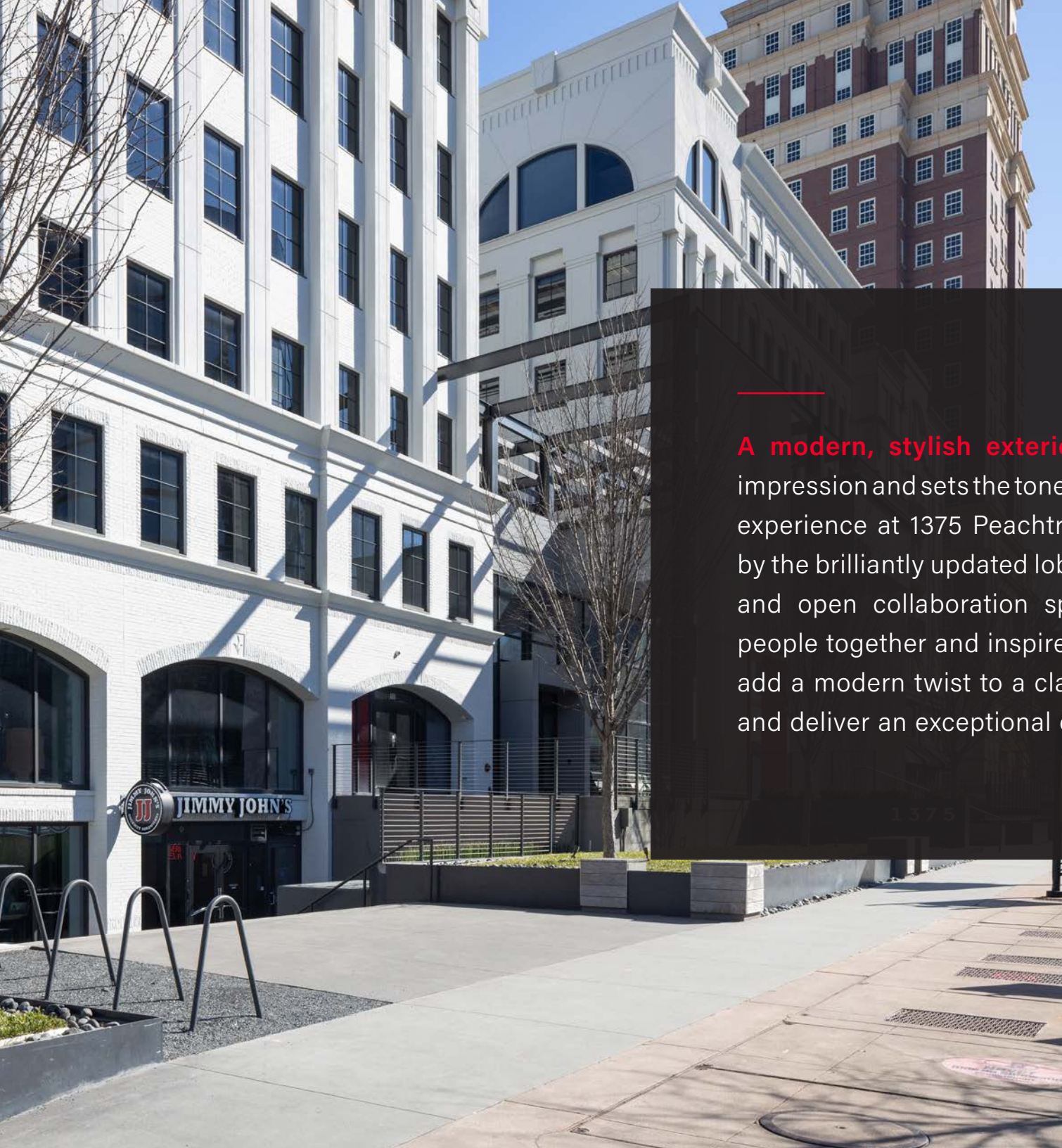
1375

PEACHTREE

REDEFINING
MIDTOWN'S
Workplace
Standard

A MODERN
TWIST
on a
Midtown
Classic





A modern, stylish exterior makes a striking first impression and sets the tone for a truly unique Midtown experience at 1375 Peachtree. Inside, you're greeted by the brilliantly updated lobby, world-class amenities and open collaboration spaces designed to bring people together and inspire great ideas. All elements add a modern twist to a classic Midtown destination and deliver an exceptional office experience.



EXPERIENCE the Midtown Advantage

At 1375 Peachtree, an exceptional Midtown location becomes one of your company's biggest advantages. A workplace planted in the heart of Atlanta offers a highly coveted modern business lifestyle and empowers tenants to attract the area's best talent.

A true destination all in its own, 1375 Peachtree gives you unrivaled access to Atlanta's world-renowned dining, retail, arts, and entertainment districts. And with easy highway and transit access, both just minutes away, your commute will never be a problem.





TRANSIT & Accessibility

MARTA ACCESS

Arts Center Station (.3 miles)
Midtown Station (.9 miles)

INTERSTATE ACCESS

Straight shot to I-75/I-85
interchange via 17th Street

CONNECTED BIKE LANES

5 miles existing
with 11 more planned

TREE-LINED SIDEWALKS

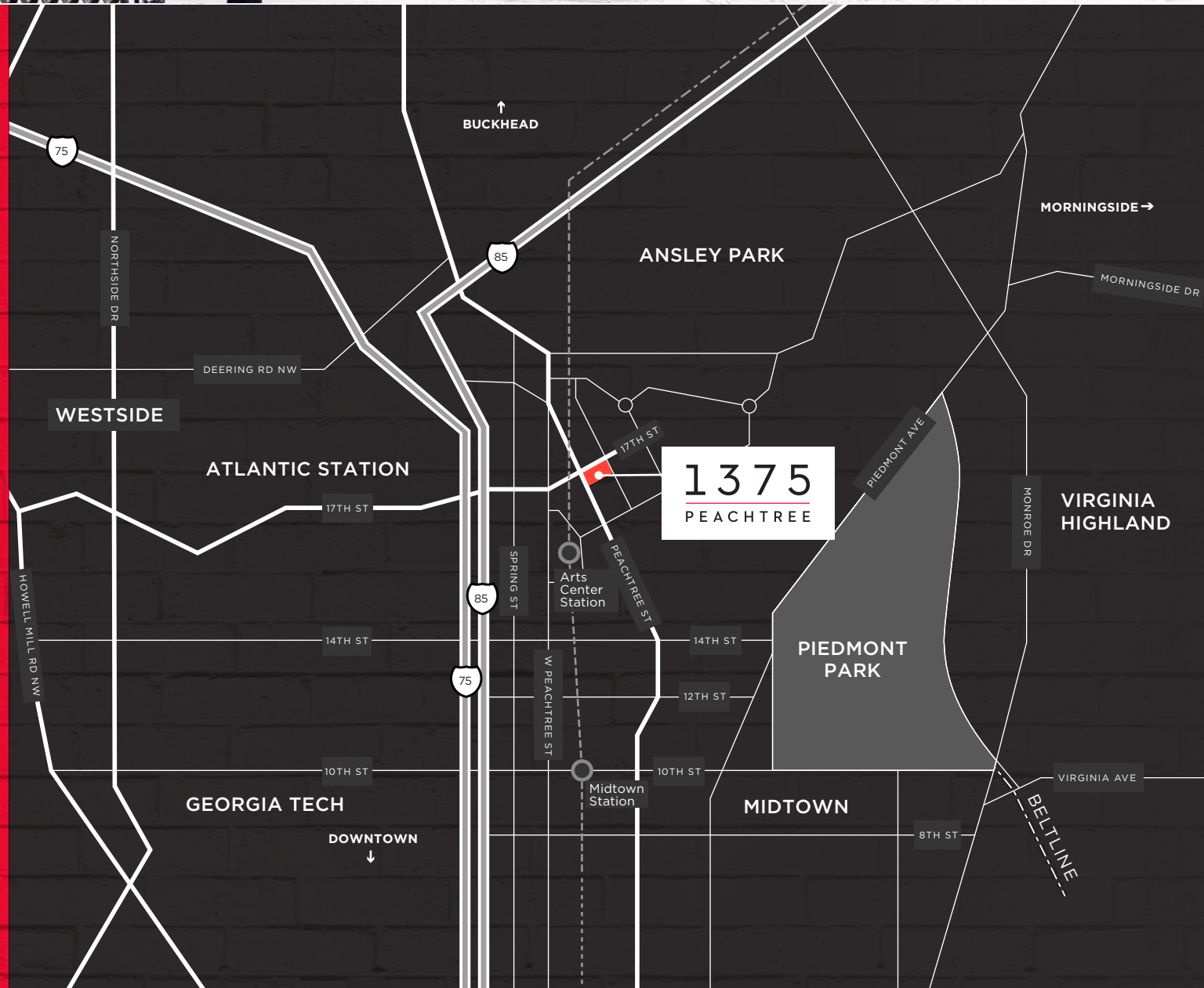
14 miles of existing
with 2 more planned

TOP TALENT POOLS

Georgia Tech
Emory University
SCAD Atlanta
Georgia State University
Morehouse
Spelman
Clark Atlanta University

NEARBY NEIGHBORHOODS

Ansley Park
Westside
Morningside
Virginia Highlands







MIDTOWN Walkability

ON-SITE AMENITIES

Brash Coffee
Rooftop Deck

Recently renovated
lobby with open staircase
and pristine finishes

Collaboration spaces
Conferencing facility

Tenant lounge with
Foosball

Street Level Seating

Jimmy John's

Fedex Office

Showers

Bike Storage

HOTELS

20+
within a 1 mile radius

Loews Atlanta Hotel
Four Seasons
Hyatt

LESS THAN
10
minute
walk

Piedmont Park
Cafe Intermezzo
The Oceanaire
Seafood Room
STK Steak House

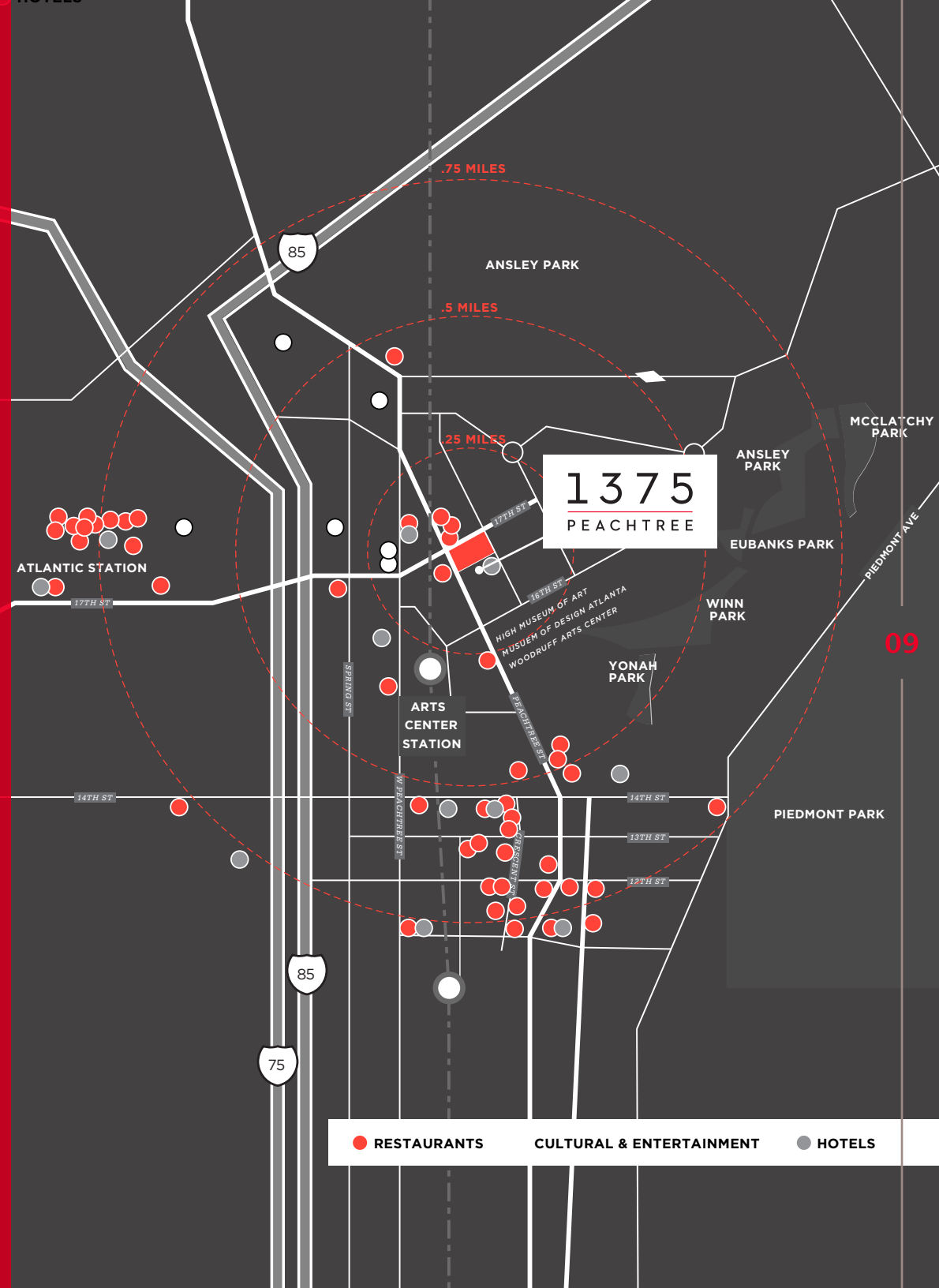
MULTI-FAMILY

15+
within a 1 mile radius

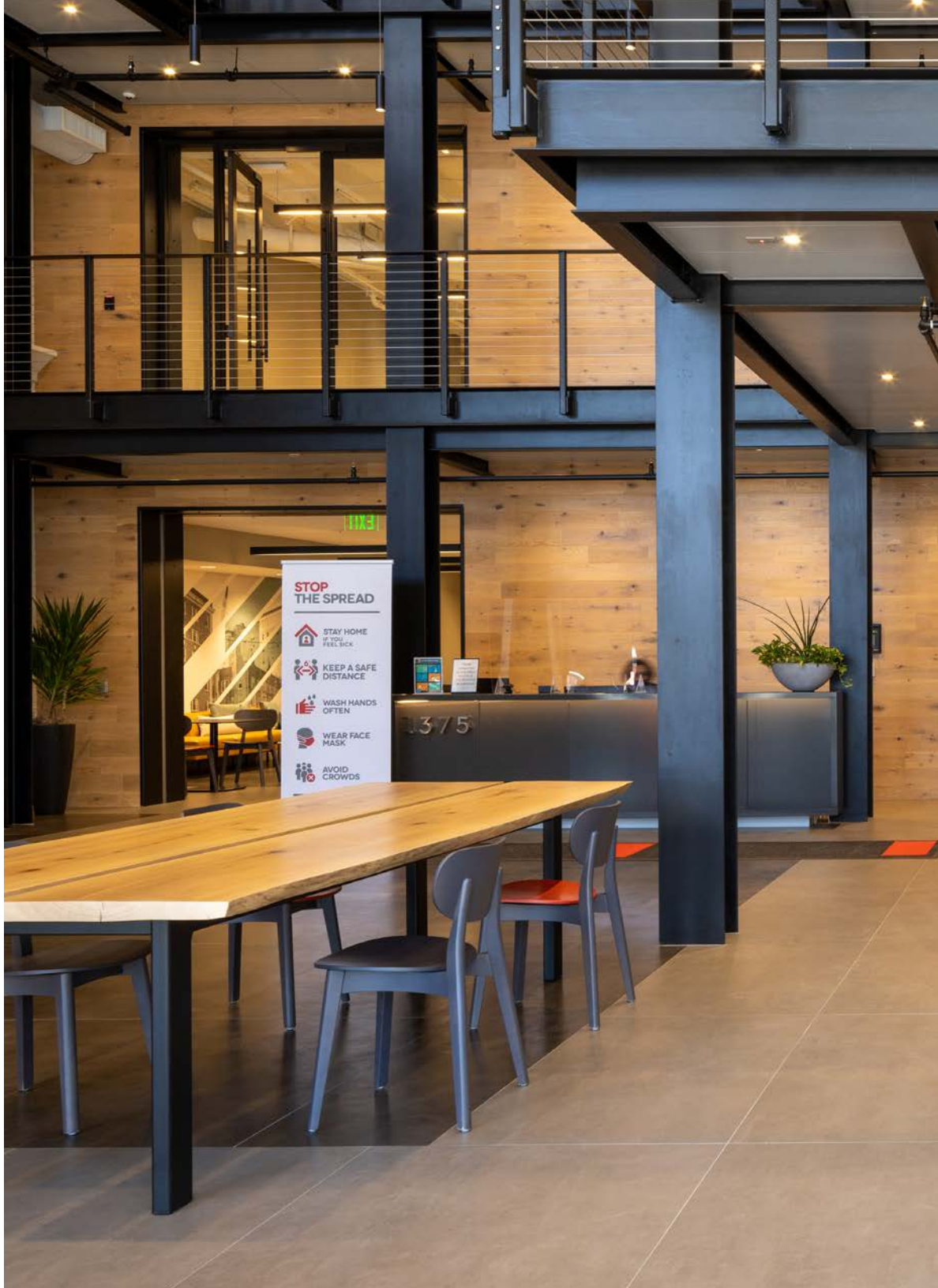
including Greystar's new
Micro-Unit Project that
will be right across the
street from 1375 Peachtree

LESS THAN
5
minute
walk

Colony Square
Woodruff Arts Center
SCAD
Ansley Park



● RESTAURANTS ● CULTURAL & ENTERTAINMENT ● HOTELS



STOP THE SPREAD

- STAY HOME IF YOU FEEL SICK
- KEEP A SAFE DISTANCE
- WASH HANDS OFTEN
- WEAR FACE MASK
- AVOID CROWDS

1375



NEW Renovation

EXTERIOR FEATURES

Modernized façade
Glass & steel grand entrance
Street level seating

ROOFTOP DECK

Midtown views
Indoor and outdoor space

LOBBY LOUNGE

Expansive group and
individual seating areas

INDOOR BIKE STORAGE

Locker and shower facilities

A NEW Workplace Standard in Midtown

The modern amenities at 1375 Peachtree are fully designed to give tenants and their guests a completely unmatched Midtown experience. Throughout the building, you can't help but notice the array of first-class amenities fully tailored to your convenience. Whether you're hosting an important client, grabbing food on the go, burning calories, or getting that all-important kick of caffeine, everything you need is right at your fingertips.

- Jimmy John's Gourmet Sandwiches
- FedEx Office printing, packing and shipping
- 24/7 security & onsite property management





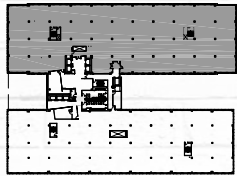
SPACE BUILT TO Inspire the Future of Innovation

14

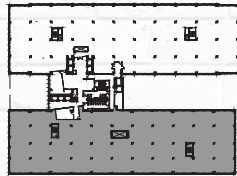
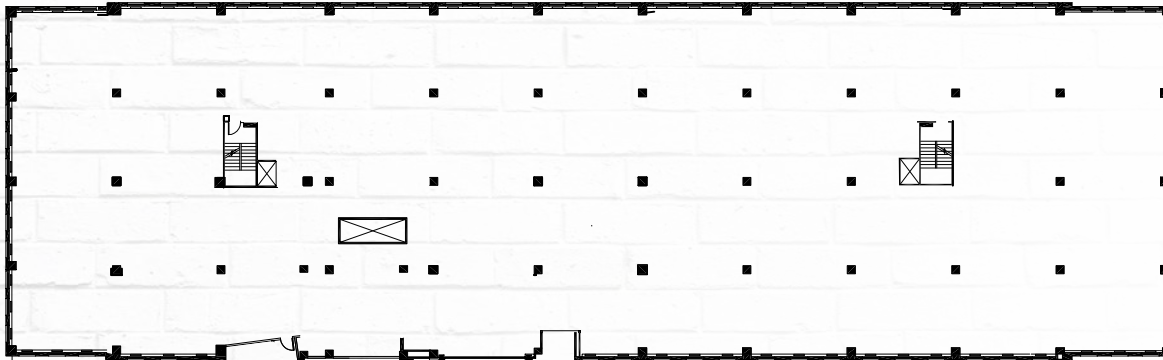
The nature of work is changing quickly. And more than ever, employees now require a place to connect and collaborate with peers. This means smart, open workspaces where flexibility, productivity and innovation converge to inspire the next great idea, are essential. Along with a host of modern collaboration tools, 1375 Peachtree offers an open and upgraded office environment designed to enhance creativity and usher in the future of innovation.



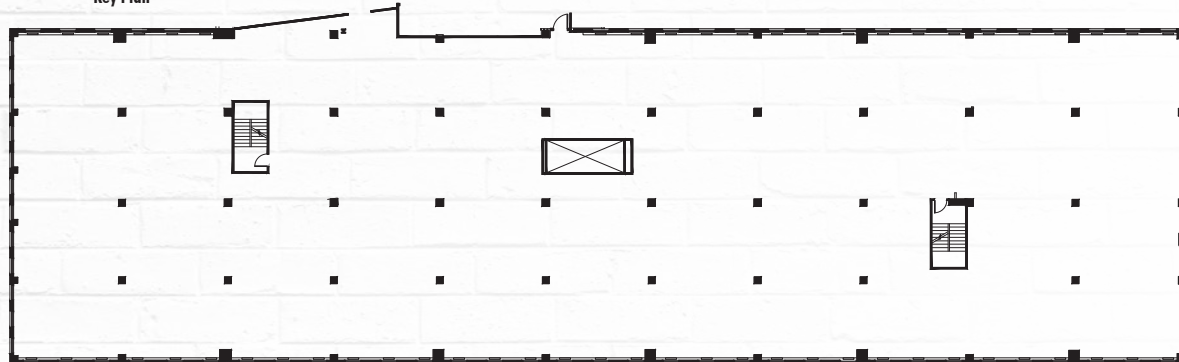
Availabilities



Key Plan



Key Plan



LARGE
100,000 SF
BLOCK
OF SPACE
AVAILABLE

**EXTERIOR
SIGNAGE**
OPPORTUNITIES
AVAILABLE
FRONTING
PEACHTREE
STREET

1375

PEACHTREE

WILL PORTER

+1 404 853 5303

Will.Porter@cushwake.com

PORTER HENRITZE

+1 404 853 5255

Porter.Henritze@cushwake.com

MELANIE GARLOCK

+1 212 599 4442

Melanie.Garlock@cushwake.com



©2022 Cushman & Wakefield. All rights reserved. The information contained in this communication is strictly confidential. This information has been obtained from sources believed to be reliable but has not been verified. NO WARRANTY OR REPRESENTATION, EXPRESS OR IMPLIED, IS MADE AS TO THE CONDITION OF THE PROPERTY (OR PROPERTIES) REFERENCED HEREIN OR AS TO THE ACCURACY OR COMPLETENESS OF THE INFORMATION CONTAINED HEREIN, AND SAME IS SUBMITTED SUBJECT TO ERRORS, OMISSIONS, CHANGE OF PRICE, RENTAL OR OTHER CONDITIONS, WITHDRAWAL WITHOUT NOTICE, AND TO ANY SPECIAL LISTING CONDITIONS IMPOSED BY THE PROPERTY OWNER(S). ANY PROJECTIONS, OPINIONS OR ESTIMATES ARE SUBJECT TO UNCERTAINTY AND DO NOT SIGNIFY CURRENT OR FUTURE PROPERTY PERFORMANCE.

