



2 HENRY ADAMS

**±313,000 SF**

**SAN FRANCISCO'S  
LARGEST BRICK &  
TIMBER OFFERING**

**60,000 SF OFFICE**

**166,000 SF R&D/LAB**

**DAVE YOUNG**

+1 415 773 3523  
dave.young@cushwake.com  
Lic. 01752874

**JD LUMPKIN**

+1 415 658 3648  
jd.lumpkin@cushwake.com  
Lic. 01215057

**MARC POPE**

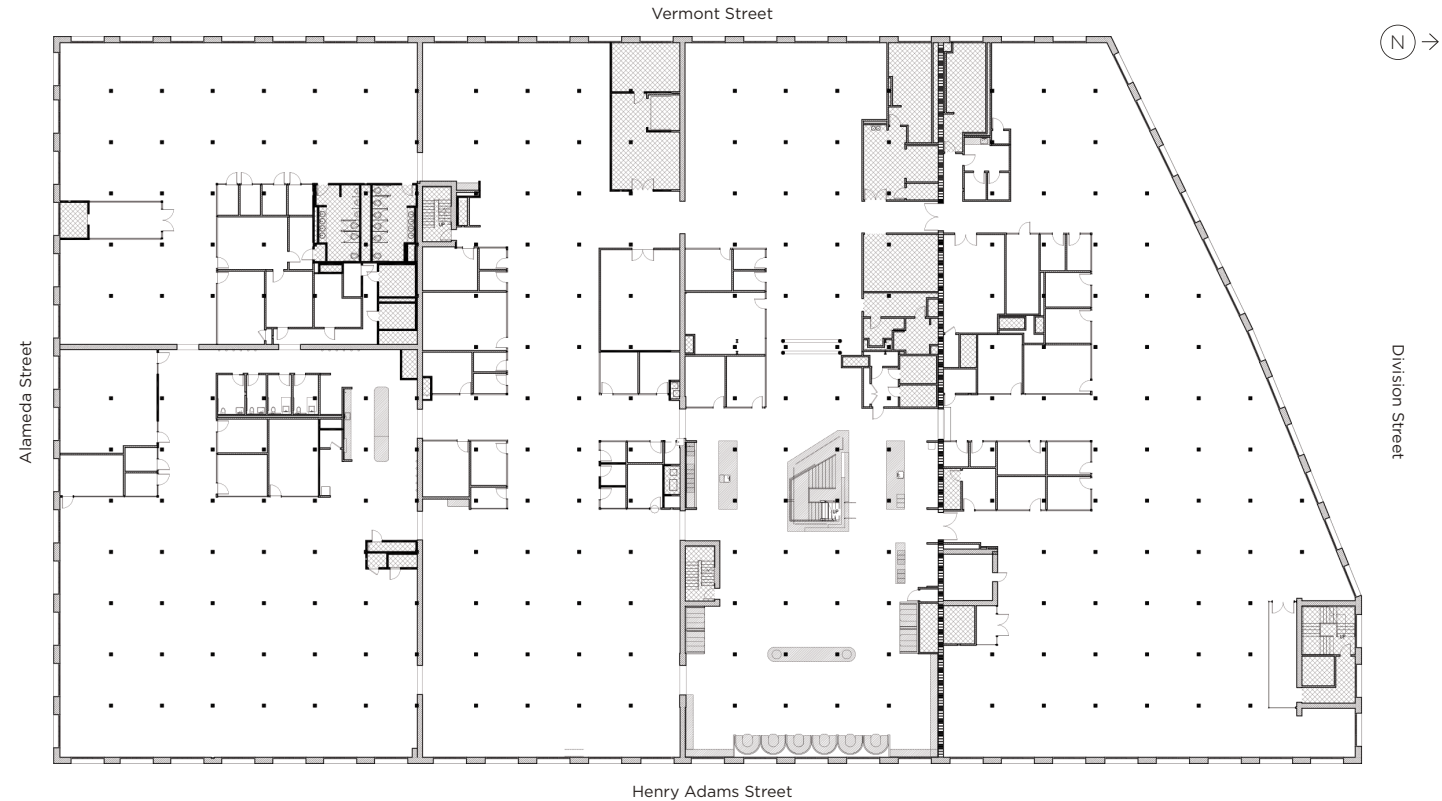
+1 650 619 2981  
marc.pope@cushwake.com  
Lic. 01474483

2henryadams.com



**4<sup>TH</sup> FLOOR**

**±74,766 RSF AVAILABLE NOW**



**Note:** Brand new interiors finished in 2020

©2022 Cushman & Wakefield. All rights reserved. The information contained in this communication is strictly confidential. This information has been obtained from sources believed to be reliable but has not been verified. NO WARRANTY OR REPRESENTATION, EXPRESS OR IMPLIED, IS MADE AS TO THE CONDITION OF THE PROPERTY (OR PROPERTIES) REFERENCED HEREIN OR AS TO THE ACCURACY OR COMPLETENESS OF THE INFORMATION CONTAINED HEREIN, AND SAME IS SUBMITTED SUBJECT TO ERRORS, OMISSIONS, CHANGE OF PRICE, RENTAL OR OTHER CONDITIONS, WITHDRAWAL WITHOUT NOTICE, AND TO ANY SPECIAL LISTING CONDITIONS IMPOSED BY THE PROPERTY OWNER(S). ANY PROJECTIONS, OPINIONS OR ESTIMATES ARE SUBJECT TO UNCERTAINTY AND DO NOT SIGNIFY CURRENT OR FUTURE PROPERTY PERFORMANCE.